

Highlight areas for press operators to quickly identify common print defects at full press speeds—including mis-registration, streaks, voids, and fills

Designed for high-speed narrow- to mid-web applications, **Graphic-Vision 500 Series Web Viewers** utilize high-resolution digital cameras and modern LED lighting for longer life, greater reliability, and lower cost.

Highlight areas for press operators to quickly identify common print defects

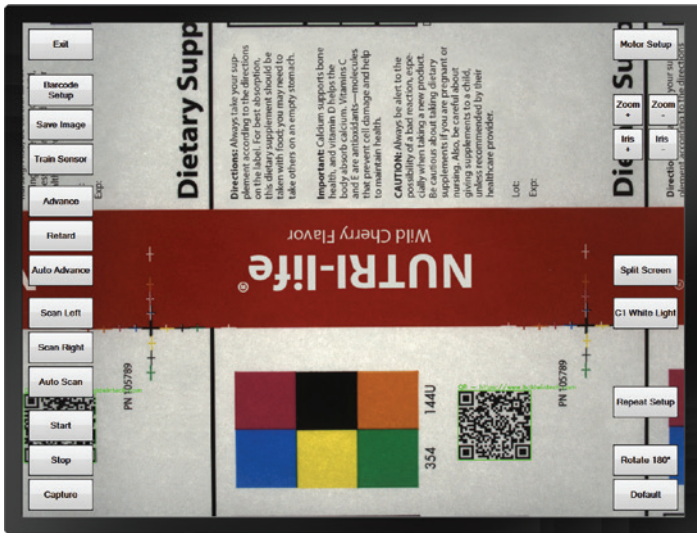
Graphic-Vision 500 Series Web Viewers provide a flexible, reliable solution for printers and packaging converters looking to find defects and errors in real time, minimizing waste and achieving the highest print quality standards.

Equipped with high-resolution digital cameras, long-life LED lighting, and barcode decoding as standard (1D linear and 2D type), 500 Series Web Viewers allow for uninterrupted production as clear images are obtained from the moving web—ensuring minimal waste and uncompromised printing speeds. All 500 Series Web Viewers are easy to use, incredibly reliable, and require very little maintenance.



Features and Benefits

- Designed for easy installation, low maintenance, unfailing consistency, and long life.
- Accurately and efficiently identify print defects with high-resolution cameras and high-frequency LED lighting—capturing greater detail and enabling increased zoom control.
- With barcode decoding as a standard feature, the systems decode and display values of most 1D linear and 2D type codes, confirming that you're printing readable codes.
- Simple setup and operation and an easy-to-use interface require very little operator training.
- A split screen on the user interface can display both images from dual cameras, or master and live web images.
- Designed by long-standing market leaders, Graphic-Vision 500 Series Web Viewers are comprised of the highest-quality industrial components, covered by a comprehensive warranty, and are supported by world-class customer service and technical teams.
- Optional dual-synchronized or asynchronous cameras display both sides of the web and monitor front-to-back register.
- The optional "Automatic Image Save" feature records images to a hard drive or network computer at a preset recording interval.
- Optional extended fields of view capture a larger section of the web image.



The Graphic-Vision 500 Series Web Viewers are an economical solution designed for narrow- and mid-web applications.

Multiple web viewing options to fit your requirements and budget

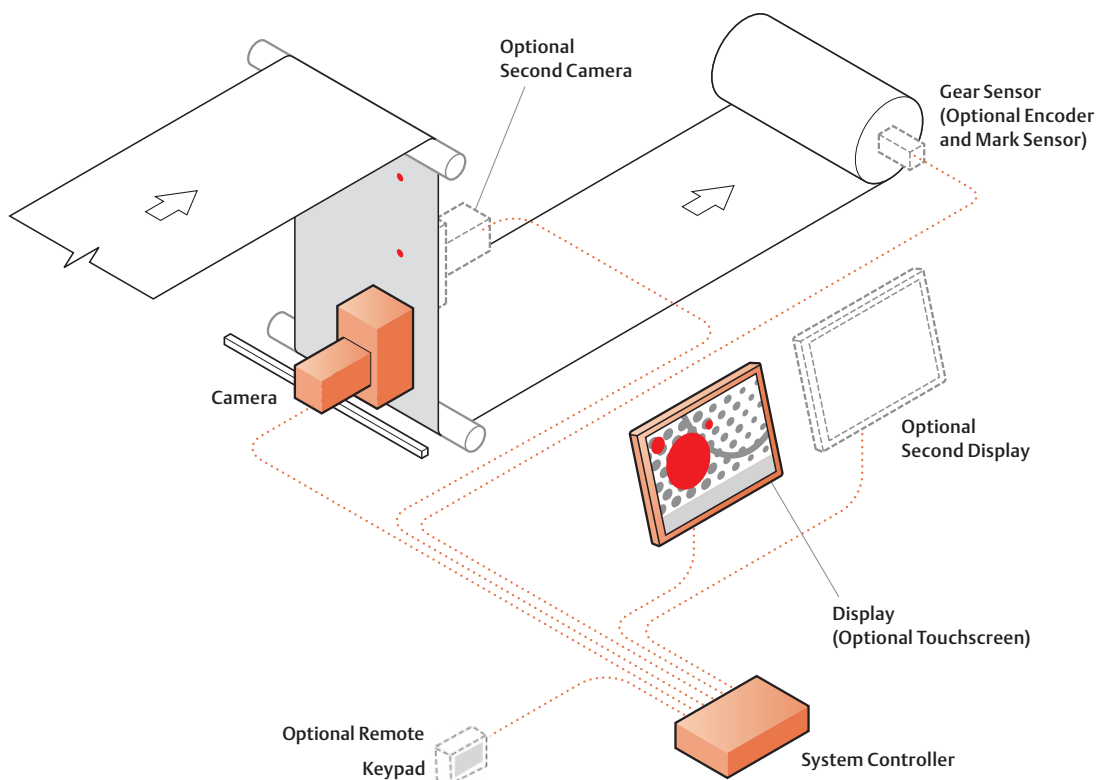
A highly-productive, cost-effective solution for full-speed web monitoring solution, the Graphic-Vision 500 Series Web Viewers are available in these configurations:

Graphic-Vision 510 Web Viewer

Developed for narrow webs (typically less than 20"/500mm wide), the 510 is the most economical solution, offering a manually adjustable camera traverse and automatic linear scanning. The 510 features a high-resolution camera, dual LED strobes, and electronic zoom for exceptional image quality at a very affordable price.

Graphic-Vision 520 Web Viewer

The 520 offers a motorized traverse, automatic linear and lateral scanning and dual LED strobes, and is ideal for narrow- and mid-web applications. Like the 510, the 520 is also equipped with a high-resolution camera and electronic zoom for exceptional image quality at an affordable price.



Specifications		510	520
Camera	Type: High-resolution 5MP color camera with electronic zoom	✓	✓
	Zoom: 10X	✓	✓
	Resolution: 2400 x 2000 pixels	✓	✓
	Field of View: 100mm (4.00") x 75mm (3.00") Dimensions: H=254mm (10.00"), D=334mm (13.16"), W=108mm (4.25")	✓	✓
	Field of View: 150mm (6.0") x 114mm (4.5") Dimensions: H=305mm (12.00"), D=375mm (14.78"), W=121mm (4.75")	optional	optional
Traverse	Manual	✓	—
	Motorized	—	✓
Power Supply	100VAC to 240VAC 50/60Hz	✓	✓
Operating Temperature	Minimum 0 °C (32°F), Maximum 40 °C (104°F)	✓	✓
	Humidity: 20% to 80%, Non-Condensing	✓	✓
Web Width	Typically Maximum 1000mm	✓	✓
Maximum Web Speed	400mpm (1330fpm)	✓	✓
Standard Features	23" LED Monitor	✓	✓
	Split Screen	✓	✓
	Reference Image Capture	✓	✓
	Basic Barcode Decoding	✓	✓
	4.5M (15ft.) Camera Cables	✓	✓
	Gear Sensor	✓	✓
	Auto-Scan	✓	✓
System Options Hardware	Remote Keypad	optional	optional
	Dual Monitor Support	optional	optional
	23" LED Monitor	optional	optional
	Mark Reset Sensor in Conjunction with Standard Gear Sensor	optional	optional
	Encoder and Mark Reset Sensor	optional	optional
	UV LED Strobe Lighting	optional	optional
	Selectable Strobe Lighting (Both White LED and UV LED)	optional	optional
	Synchronized Dual Camera Package (Front-to-Back)	optional	optional
System Options Software	Automatic Image Save & USB Image Export	optional	optional

Contact

Email: visionsolutions@baldwintech.com
www.baldwinvisionsystems.com

Follow

