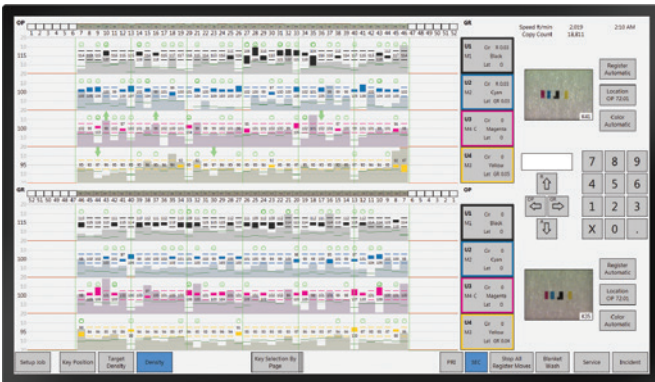
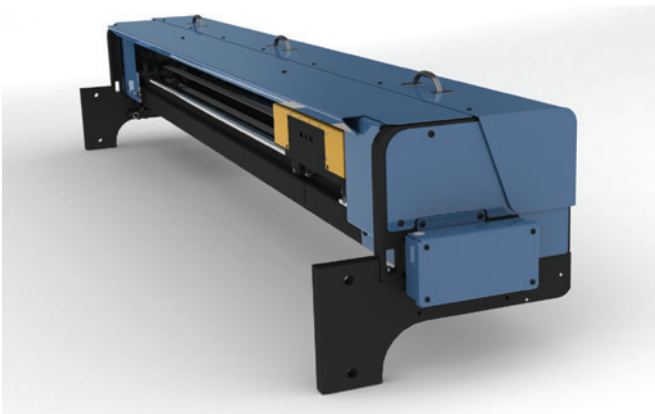


# Obsolescence notification, software/hardware upgrade

Avoid unexpected down time, end-of-life for your older system. Upgrade to the latest software and hardware for a fraction of the cost of system replacement.



The upgrade program includes a new 22" display workstation, and a host of new system features.



We replace critical hardware with state-of-the-art, modern components, leaving your current transport rails, bearings, etc. in place to reduce cost and down time.



For full details on the updated CLC+ Color and Register Control, [download the brochure >](#)

CLC+ Color and Register Control systems installed *before 2014* were designed to function on either the QNX or Windows® 7 Operating Systems. **Microsoft® corporation has officially ended its support for Windows 7**, first introduced in 2009. We are offering an easy update path that includes not only a migration to Windows 10, but also delivers new capabilities and updates your system hardware to new condition—at a fraction of the cost of replacement.

## Why Upgrade?

### End of OS support will impact your production

When a problem arises with the obsolete QNX or Windows 7 Operating System, you will suddenly face significant time without color and register control—as support for QNX/Windows 7 is no longer available.

### Organizational compliance, enhanced security

With many organizations requiring all technology to run on supported operating systems, this update to Microsoft-supported Windows 10 ensures your CLC+ system is in compliance, and will be part of your workflow far into the future.

### New features, capabilities

As with all technology, periodic software enhancements are an important part of extending the life and return on investment of advanced hardware/software systems. Ongoing development has produced new features and capabilities including:

- Track and control color register across the web
- Plate cocking control (press dependent)
- Dynamic Key Moves deliver a faster response time
- CIP3/CIP4 fountain preset software
- Enhanced system diagnostics, troubleshooting capabilities

### New hardware components

Leaving your current systems' transport rails, bearings, and motor/pulley assemblies in place reduces your cost, reduces manufacturing lead time, and limits down time needed for installation. We install a new 22" display workstation and update you to a state-of-the-art system PC. We also replace obsolete or unsupported components including cameras, encoders, electronics enclosures, I/O modules, tracking cables and other miscellaneous hardware—with *brand new components*.

### Renewed warranty, reduced cost of maintenance

Your current systems' warranty is expired. The Upgrade gives you a warranty matching our new system policies (details on back page). The modernized Operating System also affords you the opportunity to extend your coverage and eliminate budget surprises through our **Service Advantage** comprehensive support plans (*USA and Europe only*).

# Obsolescence notification, software/hardware upgrade

## Warranty

The new Warranty is for 12 months from functional acceptance of system, or 18 months from shipment—whichever comes first. Functional acceptance is deemed when the system is fully commissioned per Baldwin Vision Systems specifications. The Warranty includes repair and/or replacement parts.

The Warranty includes service time for an on-site repair if it is deemed necessary by Baldwin Vision Systems. The purchaser is responsible for return of defective component to Baldwin Vision Systems. The Warranty *does not* cover equipment damaged due to misuse or mishandling, specified in the standard operating procedure provided in the equipment manual.

*Microsoft® and Windows® are registered trademarks of Microsoft Corporation.*

### Contact

Email: [visionsolutions@baldwintech.com](mailto:visionsolutions@baldwintech.com)

[www.baldwinvisionsystems.com](http://www.baldwinvisionsystems.com)

### Follow

